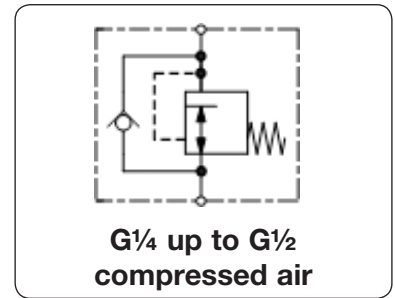


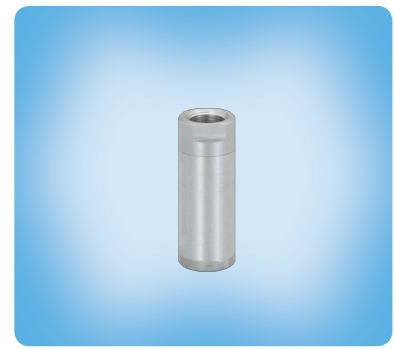
Description	In-Line pressure regulator with factory-set outlet pressure, reducing from e.g. 15 bar to 6 bar. With an outlet pressure tolerance of only ±10% it is especially suitable for nailing machines.
Benefits	<ul style="list-style-type: none"> • Higher safety through lower pressure. Tools and equipment protected against pressure damages. • Cost reduction through substantially reduced air consumption. Longer service life. • Noise reduction for tools.
Media	compressed air or non-corrosive gases
Supply pressure	max. 25 bar
Adjustment	Select the pressure regulator according to the desired outlet pressure. The outlet pressure cannot be subsequently adjusted. This safeguards against tampering.
Relieving function	relieving at removal of supply pressure
Temperature range	0 °C to 80 °C / 32 °F to 176 °F, for appropriately conditioned compressed air down to -30 °C / -22 °F
Material	Body: aluminium Elastomer: NBR/Buna-N



Dimensions			Flow rate	Supply pressure	Connection thread	Outlet pressure	Order number
Ø A	B	A/F	l/min*1	max. bar	G	bar	

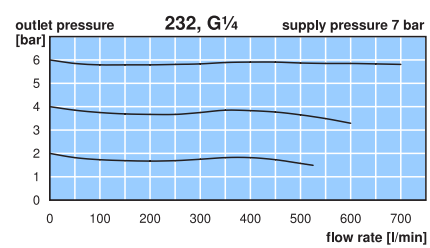
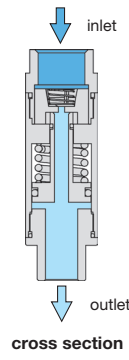
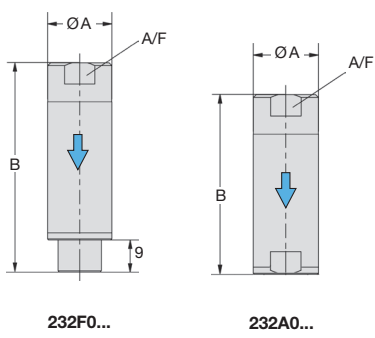
Regulator with relieving function supply pressure max. 25 bar, accuracy ±10%, aluminium body **232**

19	59	17	600	25	G ¹ / ₄ /m	2	232F0220
						4	232F0240
						6	232F0260
						8	232F0280
19	52	17	600	25	G ¹ / ₄	2	232A0220
						4	232A0240
						6	232A0260
						8	232A0280
25	58	22	1500	25	G ³ / ₈	2	232A0320
						4	232A0340
						6	232A0360
						8	232A0380
30	69	27	2500	25	G ¹ / ₂	2	232A0420
						4	232A0440
						6	232A0460
						8	232A0480



Special options, add the appropriate letter

NPT	connection thread	232. 1 . . .
other ranges	indicate pressure range on order	232. . . X X



*1 at 7 bar supply pressure, respective outlet pressure and 1 bar pressure drop